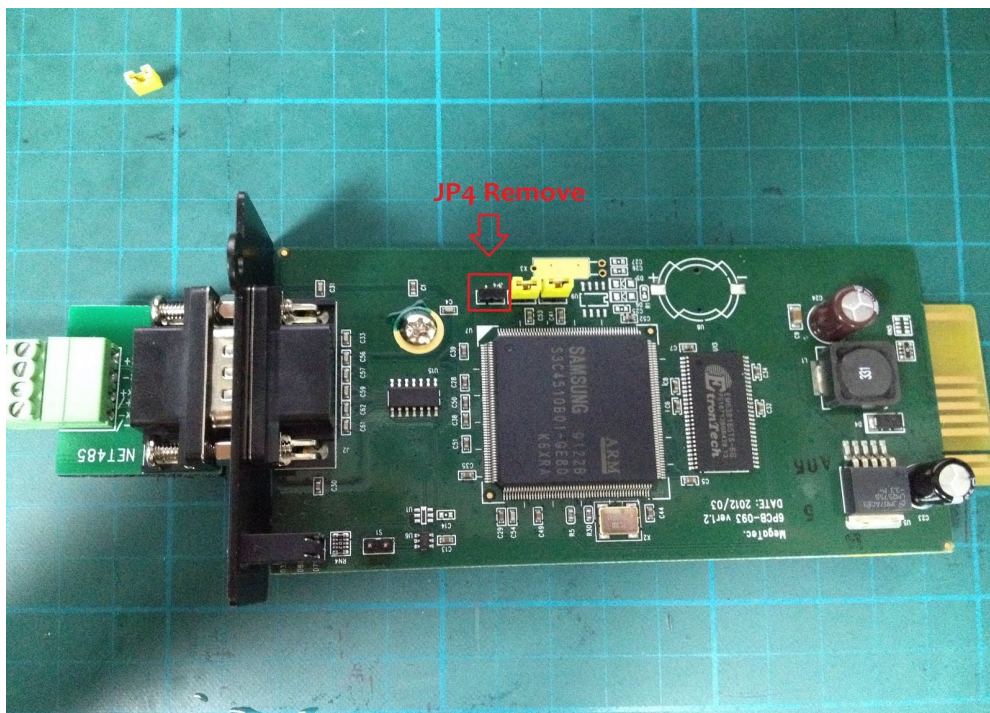
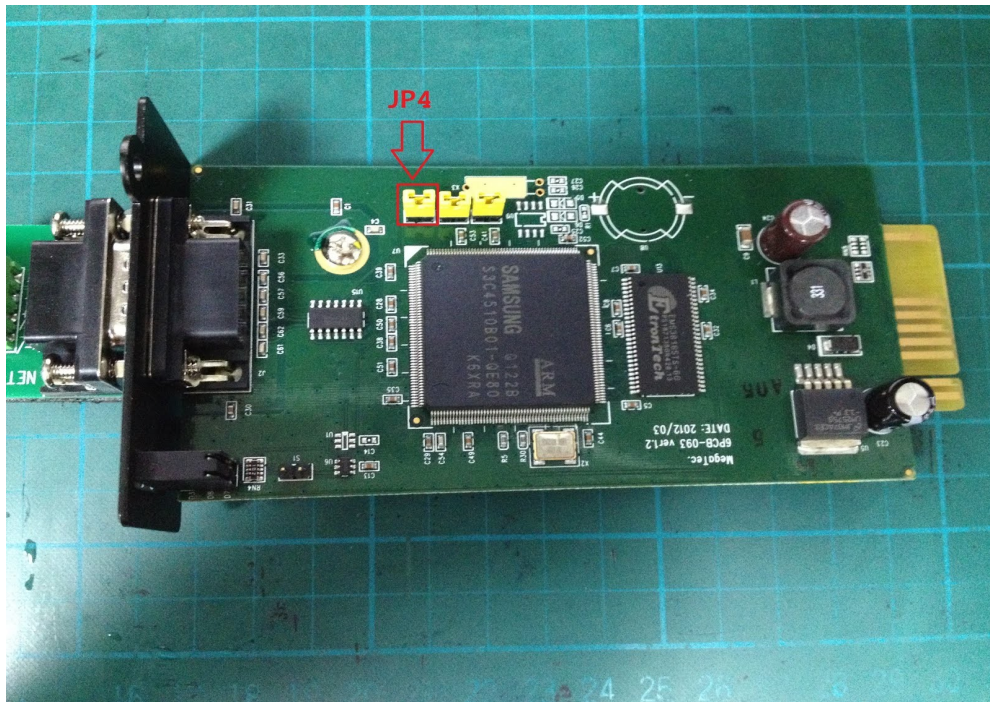
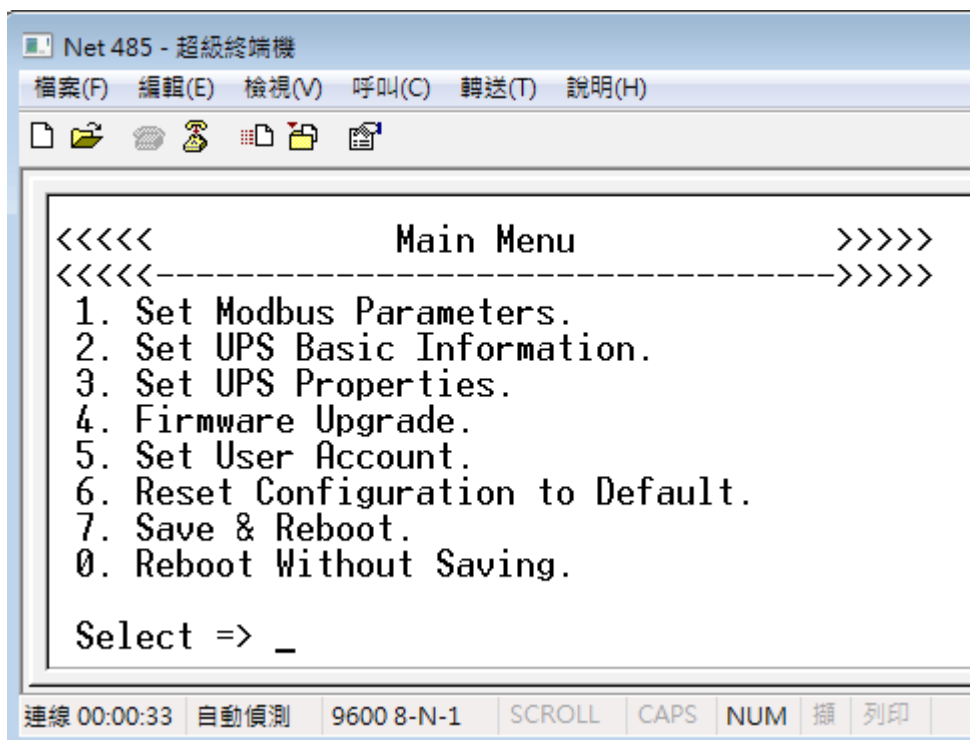
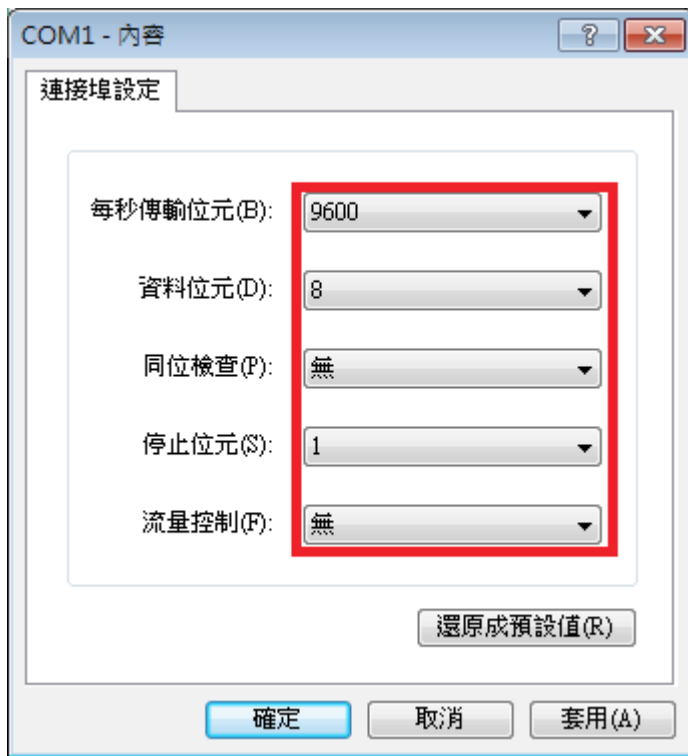


Step 1 : Remove **JP4** from the board



Step 2 : Configuration : Hyper Terminal  
=> **9600 / 8 / None / 1 / None**



Select => **1**

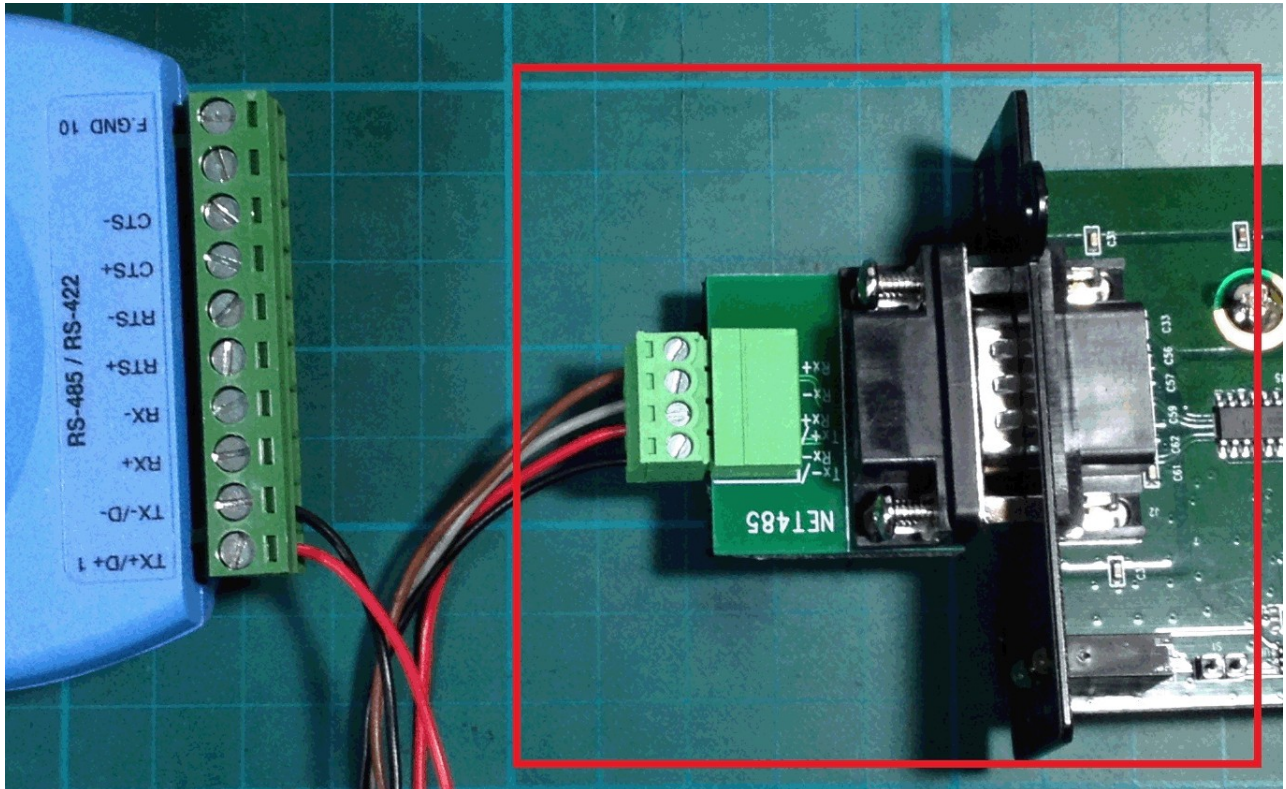
- Address = 1
- RTU mode
- Baud Rate = 9600
- RS485
- **Half Duplex**
- Normal Mode

**==> Save and Reboot**

**==> Replug on JP4**



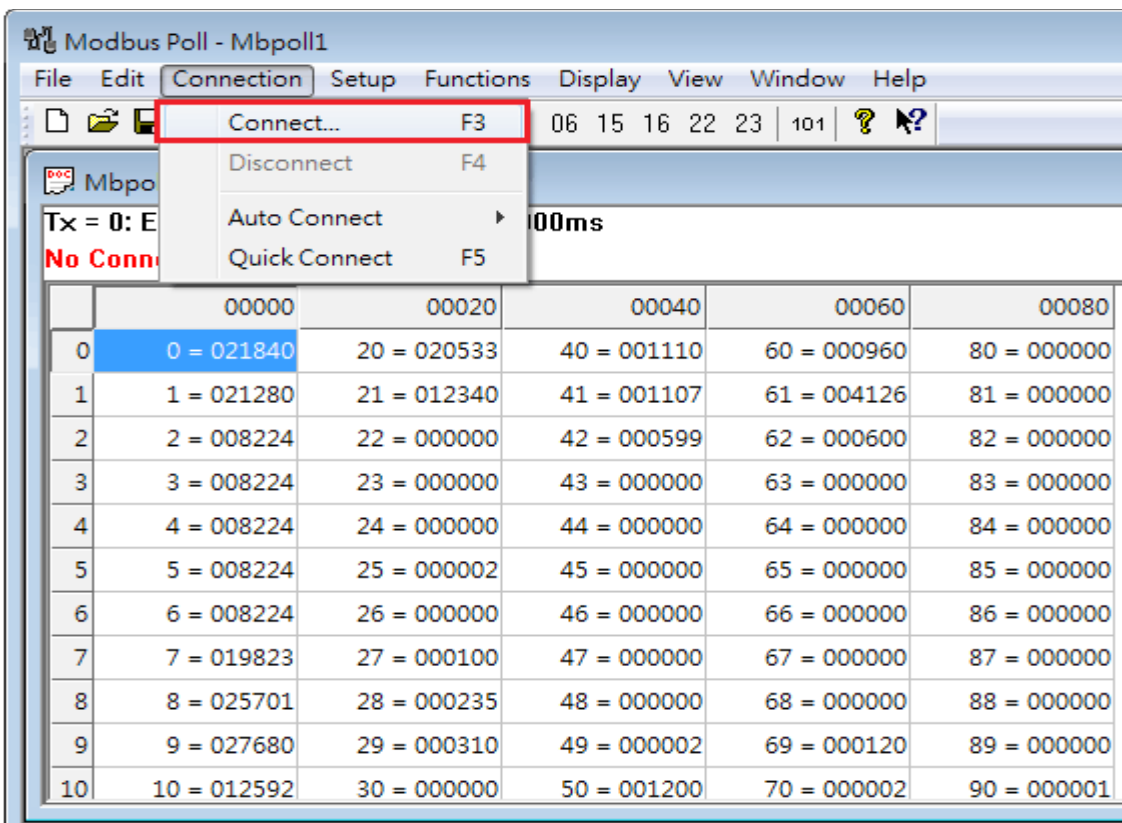
### Step 3 : Net485 & USB-to-RS485 Connector



NET485-TX-	connect	Converter-TX-
NET485-TX+	connect	Converter-TX+

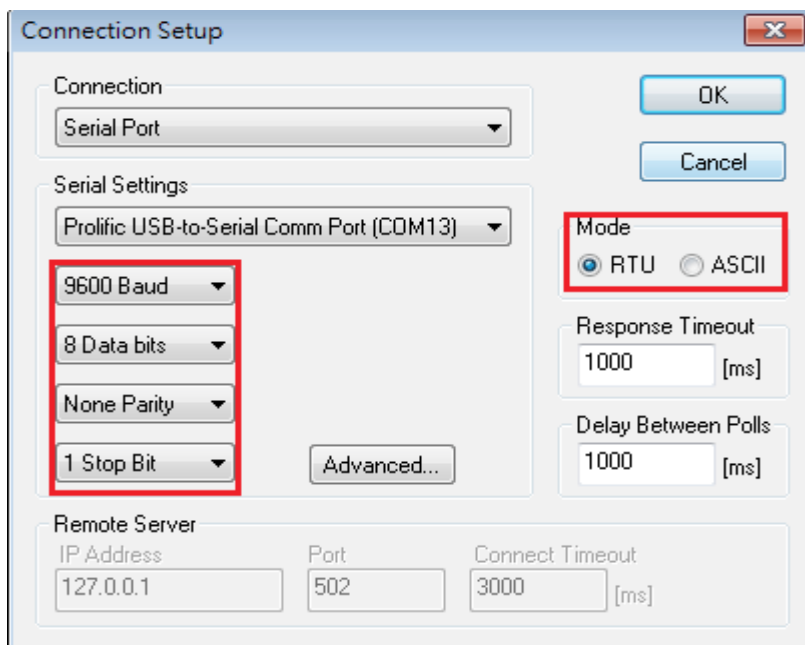
#### Step 4 : Start application : Modbus Poll

==> Connection->Connect...



==> 9600 / N / 8 / 1

==> Mode RTU



Display ==> Signed+PLC Address(Base 1)

The screenshot shows the Modbus Poll application window titled "Modbus Poll - Mbpoll1". The "Display" menu is open, showing various options for data display. Two options are highlighted with red boxes: "Signed" (with a checkmark and keyboard shortcut Alt+Shift+S) and "PLC Addresses (Base 1)".

The background shows a data table with the following structure:

	4x0000	4x0020	
Tx = 33: Err = 0: ID = 1: F = 03: SR = 10			
1	40001 = 021840	40021 = 020533	40
2	40002 = 021280	40022 = 012340	40
3	40003 = 008224	40023 = 000000	40
4	40004 = 008224	40024 = 000000	40
5	40005 = 008224	40025 = 000000	40
6	40006 = 008224	40026 = 000002	40
7	40007 = 008224	40027 = 000000	40
8	40008 = 019823	40028 = 000100	40
9	40009 = 025701	40029 = 000235	40
10	40010 = 027680	40030 = 000310	40050 = 000002 40070 = 000120 40090 = 000000
11	40011 = 012592	40031 = 000000	40051 = 001200 40071 = 000002 40091 = 000001

## Setup-Read/Write Definition

- Function (03: Read 06: Write)
- Address
- Quantity
- View Rows

Read/Write Definition

Slave ID: 1

Function: 03 Read Holding Registers (4x)

Address: 1

Quantity: 100

Scan Rate: 1000 ms

Read/Write Enabled

Read/Write Once

View

Rows:  10  20  50  100

Hide Alias Columns

Address in Cell

Display: Signed

PLC Addresses (Base 1)

OK Cancel Apply

As below result

Modbus Poll - Mbpoll1

File Edit Connection Setup Functions Display View Window Help

05 06 15 16 22 23 | 101 ? ?

Mbpoll1

Tx = 108: Err = 0: ID = 1: F = 03: SR = 1000ms

	4x0000	4x0020	4x0040	4x0060	4x0080
1	40001 = 021840	40021 = 020533	40041 = 001115	40061 = 000960	40081 = 000000
2	40002 = 021280	40022 = 012340	40042 = 001105	40062 = 004126	40082 = 000000
3	40003 = 008224	40023 = 000000	40043 = 000600	40063 = 000600	40083 = 000000
4	40004 = 008224	40024 = 000000	40044 = 000000	40064 = 000000	40084 = 000000
5	40005 = 008224	40025 = 000000	40045 = 000000	40065 = 000000	40085 = 000000
6	40006 = 008224	40026 = 000002	40046 = 000000	40066 = 000000	40086 = 000000
7	40007 = 008224	40027 = 000000	40047 = 000000	40067 = 000000	40087 = 000000
8	40008 = 019823	40028 = 000100	40048 = 000000	40068 = 000000	40088 = 000000
9	40009 = 025701	40029 = 000235	40049 = 000000	40069 = 000000	40089 = 000000
10	40010 = 027680	40030 = 000310	40050 = 000002	40070 = 000120	40090 = 000000
11	40011 = 012592	40031 = 000000	40051 = 001202	40071 = 000002	40091 = 000001